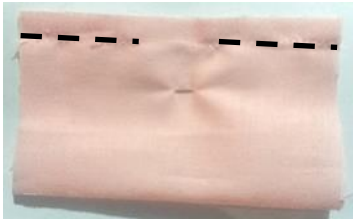


Fabric Bow

FREE
TUTORIAL



Cut 2 rectangles of fabric.

11x9cm + 4x6cm [4 2/5x 3 1/2"] + [2 3/5x 2 2/5"]



(BOW) Fold the large rectangle in half right sides facing and sew 7mm from the raw edge across the top leaving a 2cm gap in the stitching at the centre. Lay the top seam in the middle of the bow and press the seam open flat.



Sew down both short ends. Turn inside out.



(CENTRE) Fold the smaller strip of fabric in half lengthways and sew down the long side. Turn tube out the right way. Wrap around the centre of the bow and pin to mark where it sits snug.



Sew across where the pin sits. Trim off the excess, turn inside out and slip over the bow.



Hand stitch to

your dress.

Done!

